

CJV150 series

CJV150-75/107/130/160

The CJV150 series delivers...

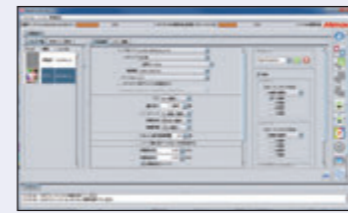
High-quality printing and sharp, accurate cutting for fresh, brilliant ideas and hundreds of different applications.

RasterLink6

Intuitive and user-friendly operation



1. Easy to follow icons enable intuitive and user-friendly operation



2. Related settings feature in one window to simplify RIP operations with 'Register as Favourite' option available for regularly used layouts



3. Printing progress can be monitored on the main screen

3-layer printing
Enables simultaneous 3-layer printing:
e.g. Colour → White → Colour

Web update function is supported:
This facility enables easy program updates and profile downloading to be performed via the internet.

Sophisticated RIP Software maximizes performance

CJV150 series

CJV150-75



For simple stickers and labels

The small-footprint CJV150-75 is perfect for stickers, labels and PoS materials.

Width: 0.8m

CJV150-107

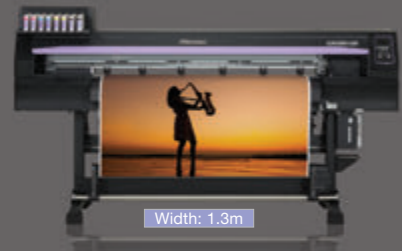


For banners and large-size posters

The CJV150-107 delivers a quick output with high quality print. Ideal for pop-up banners and large posters

Width: 1.1m

CJV150-130



For larger signage and PoS marketing materials

The wider but modestly-sized CJV150-130 provides even more flexibility.

Width: 1.3m

CJV150-160



For cost effective production of large, high-quality signage and vehicle wrapping films

The CJV150-160 has the widest working width in the range, and satisfies a wide variety of production demands.

Width: 1.6m

Specifications

	CJV150-75	CJV150-107	CJV150-130	CJV150-160
Printhead	On-demand piezo head			
Print resolution	360dpi, 540dpi, 720dpi, 1,080dpi, 1,440dpi			
Maximum print width	800mm	1,090mm	1,361mm	1,610mm
Maximum media width	810mm	1,100mm	1,371mm	1,620mm
Ink	Solvent ink ES3 (C, M, Y, K, Lc, Lm) - SS21 (C, M, Y, K, Lc, Lm, Lk, Or, W, Si) - BS3 / BS4 (C, M, Y, K)			
	Water-based sublimation ink Sb53 (Bl, M, Y, K, Dk, Lb, Lm) - Sb54 (Bl, M, Y, K)			
Package size	ES3: 440ml Ink cartridge SS21: 440ml Ink cartridge / 2L Ink pack* (W and Si: 220ml cartridge only) BS3 / BS4: 600ml Ink pack / 2L Ink pack* Sb53: 440ml Ink cartridge / 2L Ink pack* Sb54: 2L Ink pack*			
Circulation system	MCT (Mimaki Circulation Technology) Only applies to white and silver inks			
Media thickness	1.0mm or less			
Rolled media weight	40kg or less			
Certifications	VCCI class A / FCC class A / ETL UL 60950 CE Marking (EMC, Low voltage, and Machinery directive) / CB RoHS / REACH and Energy Star / RCM			
Interface	USB 2.0, for E-mail notification function			
Power supply	Single-phase (AC 100-20V / AC 220-240V)			
Power consumption	100V: 1.44 kVA × 1 or less, 200V: 1.92 kVA × 1 or less			
Operational environment	Temperature: 20-30 C (69-86 F), Humidity: 35-65% Rh (Non condensing)			
Dimensions (W × D × H)	1,965 × 700 × 1,392mm	2,255 × 700 × 1,392mm	2,525 × 700 × 1,392mm	2,775 × 700 × 1,392mm
Weight	126kg	142kg	157kg	168kg

*1: White and silver are provided in 220ml Ink cartridge only.
*2: Optional MBIS (Mimaki Bulk Ink System) is required for using 2L Ink pack.

Supplies

Item	Colour		
ES3	Cyan	SPC-0440C	440ml Ink cartridge
	Magenta	SPC-0440M	
	Yellow	SPC-0440Y	
	Black	SPC-0440K	
	Light Cyan	SPC-0440LC	
	Light Magenta	SPC-0440LM	
SS21	Cyan	SPC-0501C	440ml Ink cartridge
	Magenta	SPC-0501M	
	Yellow	SPC-0501Y	
	Black	SPC-0501K	
	Light Cyan	SPC-0501LC	
	Light Magenta	SPC-0501LM	
SS21	Orange	SPC-0501Or	2,000ml Ink pack
	Light Black	SPC-0501Lk	
	White	SPC-0504W-2	
	Silver	SPC-0504Si	
	Cyan	SPC-0588C	
	Magenta	SPC-0588M	
	Yellow	SPC-0588Y	
	Black	SPC-0588K	
	Light Cyan	SPC-0588LC	
	Light Magenta	SPC-0588LM	
Orange	SPC-0588Or		
Light Black	SPC-0588Lk		

Item	Colour	600ml Ink pack	2,000ml Ink pack
BS3	Cyan	SPC-0667C	SPC-0693C
	Magenta	SPC-0667M	SPC-0693M
	Yellow	SPC-0667Y	SPC-0693Y
	Black	SPC-0667K	SPC-0693K
BS4	Cyan	BS4-C-60	BS4-C-2L
	Magenta	BS4-M-60	BS4-M-2L
	Yellow	BS4-Y-60	BS4-Y-2L
Black	BS4-K-60	BS4-K-2L	

Item	Colour	440ml Ink cartridge	2,000ml Ink pack
Sb53	Blue	SB53-BL-44	SB53-BL-2L
	Magenta	SB53-M-44	SB53-M-2L
	Yellow	SB53-Y-44	SB53-Y-2L
	Black	SB53-K-44	SB53-K-2L
	Deep Black	SB53-DK-44	SB53-DK-2L
	Light Blue	SB53-LBL-44	SB53-LBL-2L
Sb54	Light Magenta	SB53-LM-44	SB53-LM-2L
	Blue		SB54-BLT-2L
	Magenta		SB54-MT-2L
	Yellow		SB54-YF-2L
Black		SB54-KT-2L	

* Some of the samples in this folder are artificial renderings * Specifications, design and dimensions stated in this folder may be subject to change without notice (for technical improvements, etc.)
* The corporate and merchandise names written on this folder are the trademark of the respective corporations * Inset printers print using extreme fine dots, so colours may vary after replacement of the printing heads, also note that if using multiple printer units, colours could vary slightly from one unit to other unit due to slight individual differences * Composer's errors reserved

VERSATILE PRINT & CUT FUNCTION

The multiple functions of the CJV150 models ensure high-quality printing and high-accuracy cutting enabling the production of labels, stickers and vehicle wraps with ease.

Continuous-register mark-detection function enables continuous media cutting.

The CJV150 automatically detects all register marks set by RasterLink6 on the media, and cuts contour lines precisely by utilising simultaneous automatic calibration.



Over-cut and corner-cut functions ensure clearly cut edges with no residues.

The over-cut function ensures sharply cut edges with no residues by making a cross cut at the start and end positions of the contour cutting. The corner-cut function ensures sharply cut edges by making cross cuts at each corner.



Clamp-pressure automatic-switching function enables continuous operation.

The pressure of the media clamps is automatically optimised for printing and cutting. No pressure adjustment by the operator is required during continuous operation.

Print and cut on no-register mark media / Cut and print function

Media up to 1m in length does not require register marks, reducing media wastage.

Segment correction function facilitates precision cutting over longer-length prints.

This function detects intermediate register marks and enables four-point corrections for each segment to ensure accurate contour cutting over longer-length prints, even if the image is distorted.

"Cut and Print" function improves the workability of thin materials.

This function prevents common problems, such as film separation and faulty cut results, by cutting the media before printing.

Versatile cutting methods satisfy a range of market demands.

"Half-cut" produces a series of half and die cuts, leaving a few connection points that retain the printed image on the medium. "Die cut" completely cuts the printed image from the medium. "Perforation cut" is useful for clipping images from the medium, used as crease lines.

Affordable, integrated printer/cutter...



www.mimakieurope.com info@mimakieurope.com @MimakiEurope

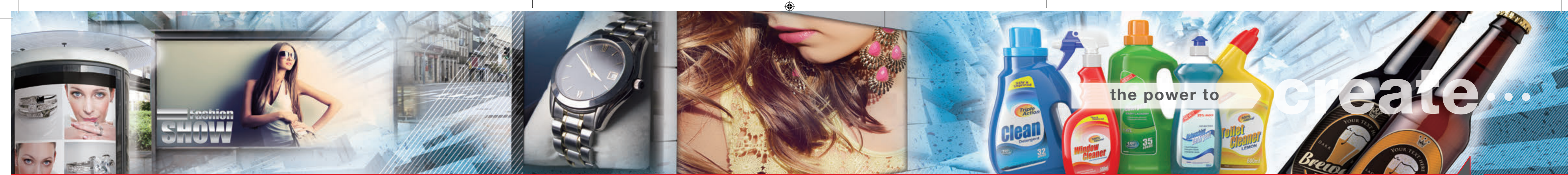
Mimaki Europe B.V. Stammerdijk 7E, 1112 AA Diemen, The Netherlands Tel: +31 (0)20 4627640



SIGN & GRAPHICS



The world imagines... Mimaki delivers



Mimaki

Affordable, high-spec, high-performance, integrated printer/cutter

CJV150 Series integrated printer/cutter from Mimaki provides high performance, creativity and versatility with vibrant ink types, including new Silver, Orange and Light Black, in a cost effective package for signmakers, display graphics professionals and printshops.

ENGINEERING EXCELLENCE AND CREATIVE INNOVATION

Founded in Japan in 1975, Mimaki Engineering has steadily grown by reputation and influence into a global company with large operational bases in Asia and the Pacific, United States and Europe.

Renowned for award-winning performance, peerless build quality and innovative technology, Mimaki has established itself as a leading manufacturer of wide-format inkjet printers and cutting machines for the sign and graphics, textile and apparel and industrial markets. In addition, Mimaki also provides a comprehensive range of supporting products; hardware, software and associated consumable items, such as inks and cutting blades.

From outdoor signage and billboards to interior decoration and furnishing, from packaging and labels to promotional gifts and apparel, Mimaki is committed to developing technology that sets new industry standards, producing machines and products that turn the imagination of our customers into breath-taking reality.

... Mimaki delivers

CJV150 series delivers ...

- Fast printing speeds up to 56.2m² per hour
- High quality print resolution of up to 1,440dpi
- Four different printing widths: 800mm, 1,090mm, 1,361mm and 1,610mm
- Choice of multiple eco-solvent and dye sub ink sets:
 - 10-colour options (SS21) featuring; Silver, Orange, Light Black & White inks
 - Vibrant 4- or 6-colour dye sub options (Sb53/Sb54)
- Nozzle Check Unit (NCU) and Nozzle Recovery System (NRS) ensure continuous print operations
- UISS and optional MBIS on board 2 litre bulk ink system
- 3-way intelligent heater

SOLVENT & DYE SUB INKS

4 PRINT WIDTHS AVAILABLE

1,440DPI MAX RESOLUTION

MAPS3 PRINT ENHANCEMENT FUNCTION

56.2m²/h MAX. SPEED



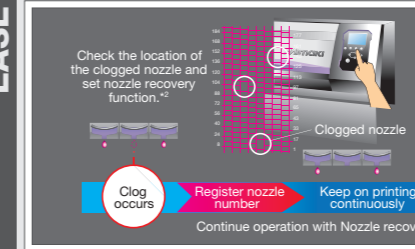
Create ... Metallic stickers, Decals, Die-cut labels, Signage, Vehicle graphics, Banners, Posters, PoS, Back-lit & Exhibition graphics, Garment marking, Canvas prints and much more...

EASE OF USE

Productivity maintenance - NRS^{*1}

The NRS substitutes defective nozzles with non-defective nozzles until the technician arrives. This feature enables uninterrupted print operations and continuous productivity.

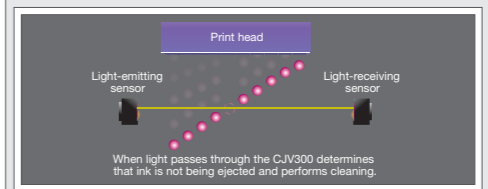
^{*1} NRS: Nozzle Recovery System ^{*2} 10 nozzles per nozzle row can be registered.



Prevention, print quality problems - NCU^{*}

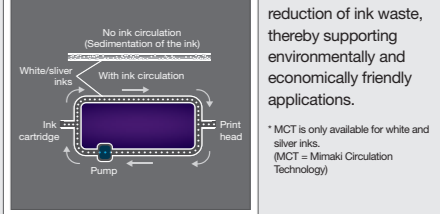
The CJV150 is equipped with Mimaki's original automatic NCU. Clogged nozzles are automatically detected and cleaned by the NCU. If the clogging is not resolved by cleaning, the CJV150 automatically sets the nozzle recovery function NRS and resumes printing. These functions significantly reduce the waste printing caused by clogged nozzles during a continuous printing run.

^{*}NCU: Nozzle Check Unit



Stable printing using the ink circulation system - MCT^{*}

MCT is a standard feature included to effectively avoid the settling of white and silver pigments in the ink lines by regularly circulating the ink. It prevents print troubles and enables stable output from the start of operation. In addition, MCT contributes to reduction of ink waste, thereby supporting environmentally and economically friendly applications.

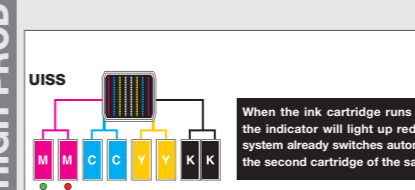


^{*}MCT is only available for white and silver inks. (MCT = Mimaki Circulation Technology)

HIGH PRODUCTIVITY

Uninterrupted Ink Supply System (UISS)

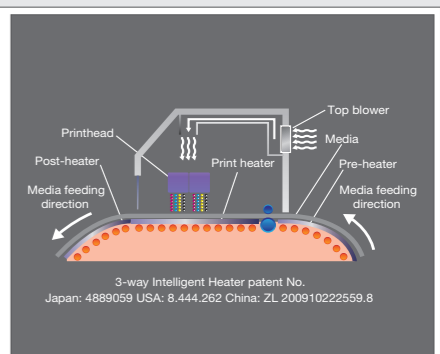
Utilises two cartridges per colour in 4-colour mode. When one cartridge runs out of ink the system switches automatically to the second cartridge of the same colour, enabling long unattended printing.



3-Way intelligent heater

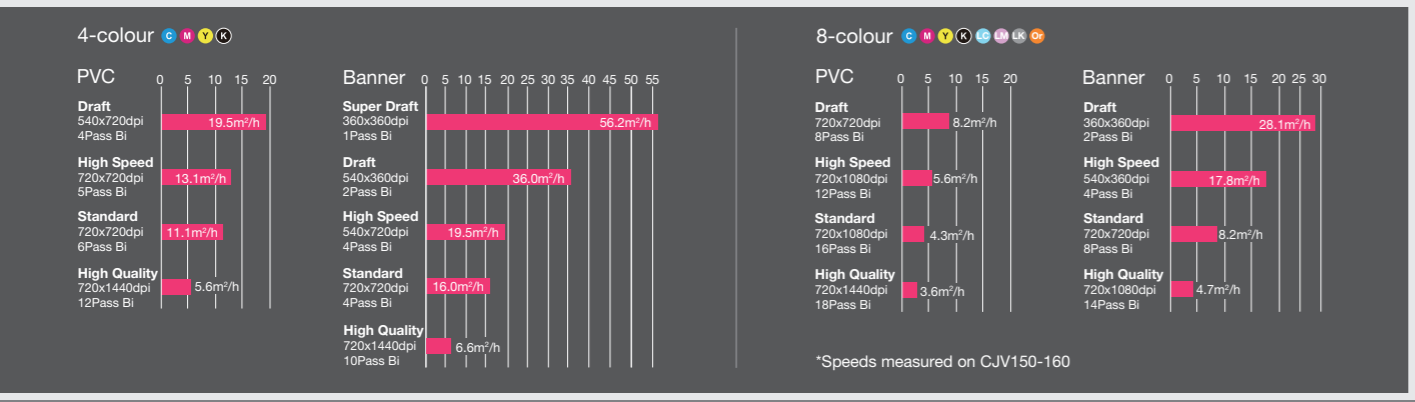
A 3-way intelligent heater fixes droplets placed on media. By using Mimaki's original technology in heating the media at a controlled temperature, ink can be fixed while maintaining high colour development and high image quality. Thus the CJV150 provides both steady colour development and easy handling after printing.

- Pre-heater: Heats media to the optimum temperature before printing.
- Print heater: Dries ink after it lands on media before it bleeds, improving colour development.
- Post-heater: Enhances ink drying and achieves stable take-up.
- Top blower: Air blower supports drying of ink.



KEY TECHNICAL FEATURES ...

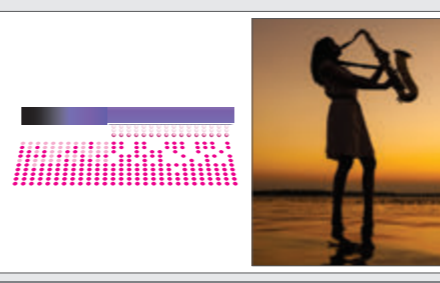
HIGH PRINT SPEEDS



BEAUTIFUL OUTPUT

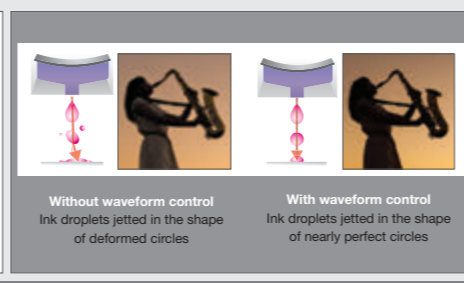
MAPS (Mimaki Advanced Pass System)

Reduces banding by dispersing ink drops between passes.



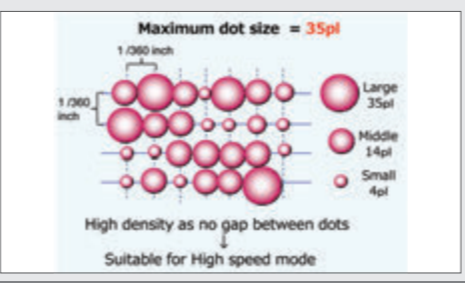
Waveform Control Technology

Ensures high quality print resolution, by jetting ink drops in straight lines with almost perfect round dots, delivering clear and sharp letters, lines and edges.



Large ink dot size in high speed mode

Delivers high density print by removing the gap between dots.



CREATIVITY

Silver Ink (For brilliant metallic effects)

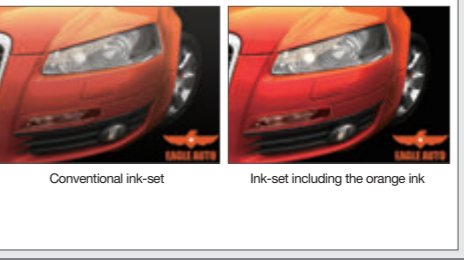
Newly developed SS21 silver ink is available. Being 1.67^{*} times brighter than conventional silver inks, SS21 ink adds brilliant and beautiful mirror effects to print results.

^{*}Obtained from comparison measurements of SS21 and ES3 silver inks conducted at the Mimaki HQ



Orange Ink (Faithful colour reproduction)

By using the orange ink as a process colour, 94.8% of the PANTONE colour chart is covered with approximate colours. Thanks to a wider gamut with the orange ink, food freshness can be simulated, and corporate colours can be faithfully represented.



Light Black Ink (greater definition)

The light black ink improves the printed grayscale gradation. It also faithfully represents monochrome data without introducing unexpected colour shifts. Light black ink ensures a more accurate colour representation.

